

GENERAL NOTES:

ALL DRAWINGS TO BE READ IN CONJUNCTION WITH RELEVANT STRUCTURAL ENGINEERS DRAWINGS, WINDOW & DOOR SCHEDULES, M&E DRAWINGS, CONTAINER DATA SHEETS & PRODUCT DATA SHEETS.

PRINCIPAL ENTRANCE TO HAVE LEVEL THRESHOLD & CLEAR OPENING OF MIN. 775MM, DOOR TO BE FD30S FIRE RATED (FRAME & GLAZING - WHOLE UNIT) WITH SMOKE SEALS & SELF CLOSING DEVICE.

REFER TO M&E DRAWINGS FOR SETTING OUT HEIGHTS OF FITTINGS

ALL CONTAINERS & ALL STEEL COVER PLATES, & STEEL MOUNTING PLATES TO BE PAINTED EXTERNALLY ANTHRACITE GREY, RAL 7016 USING CONTAINERGARD 1 TOUCH UP PAINT, OIL BASED, MATT FINISH. ENSURE PAINT HAS A CLASS 0 SURFACE SPREAD OF FLAME.

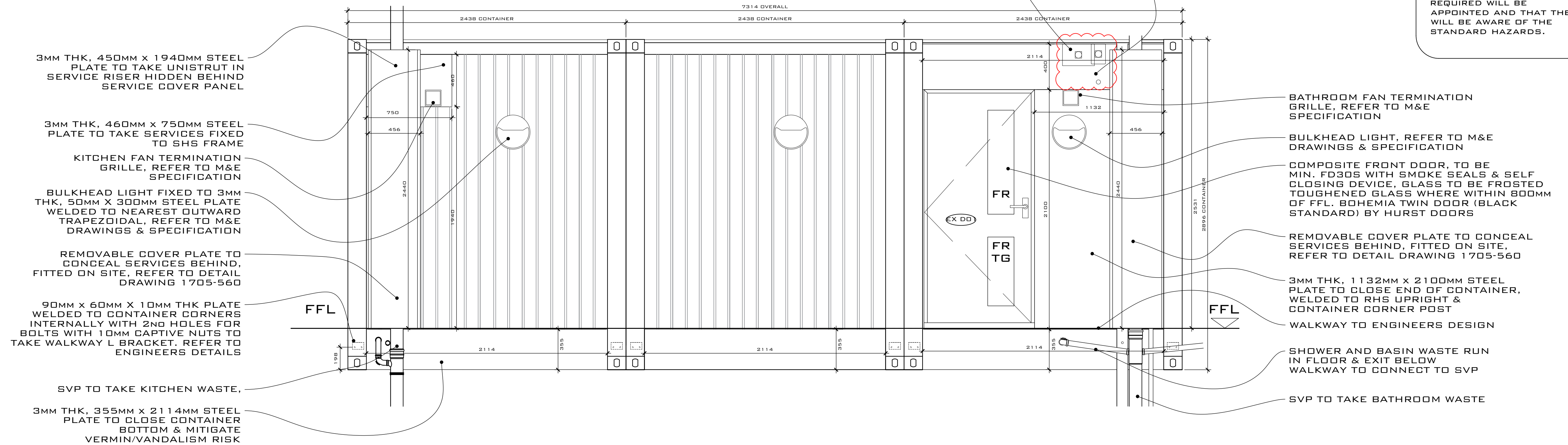
ALL UNITS TO INCLUDE WINDOW & DOOR BLINDS.

FR = FROSTED GLASS  
TG = TOUGHENED GLASS

CABLES TO BE TERMINATED INTO THE BOTTOM OF ISOLATOR

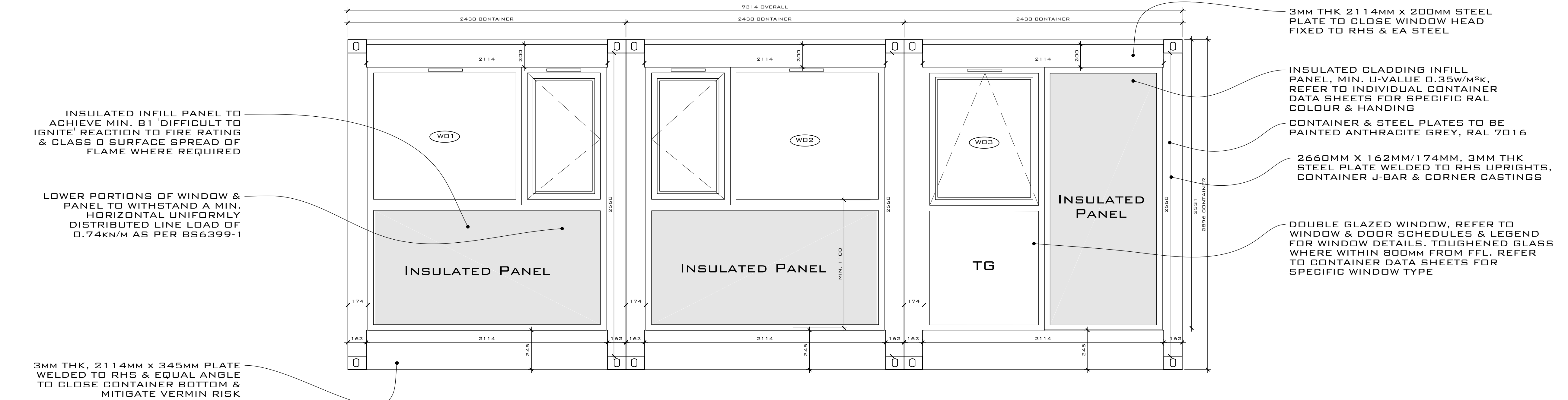
MANUFACTURERS TO ENTER IN RIGHT SIDE UNDER, SITE CONTRACTORS LEFT SIDE UNDER, BOTH PROTECTED.

EUROPA RS OR MCG 100A, IP65 ISOLATOR IN LOCATIONS AS SHOWN



TYPE 3 - FRONT ELEVATION - HANDED

1:20 SCALE @ A1



TYPE 3 - REAR ELEVATION - HANDED

1:20 SCALE @ A1

CDM 2015  
Residual Risk

THR CONTRACTORS SHALL FAMILIARISE THEMSELVES WITH THE PROJECT AND EMPLOY SYSTEMS AND METHODS OF WORKING TO REDUCE ANY HAZARDS

THE CONTRACTORS SHALL PLAN, MANAGE, MONITOR AND COORDINATE HEALTH AND SAFETY DURING THE CONSTRUCTION PHASE OF A PROJECT

IF IN DOUBT ASK AND NOTIFY THE DESIGN TEAM

GENERAL

IT IS ASSUMED THAT A COMPETENT CONTRACTOR FAMILIAR WITH THE WORKS REQUIRED WILL BE APPOINTED AND THAT THEY WILL BE AWARE OF THE STANDARD HAZARDS.

NOTES:

- DRAWINGS SHOULD ONLY BE SCALED FOR PLANNING PURPOSES. DO NOT SCALE FROM THIS DRAWING FOR CONSTRUCTION PURPOSES.
- ALL DIMENSIONS ARE IN MM, UNLESS STATED OTHERWISE.
- ALL DIMENSIONS TO BE CHECKED ON SITE PRIOR TO CONSTRUCTION OR ORDERING.
- ANY ERRORS OR OMISSIONS TO BE NOTIFIED TO CITIZEN LLP IMMEDIATELY.
- CONTRACTOR TO READ & CHECK ALL MANUFACTURES LITERATURE AND IMPLEMENT ITS REQUIREMENTS PRIOR TO INSTALLATION OF ANY MATERIALS AND COMPONENTS.
- CITYZEN LIMITED IS NOT RESPONSIBLE FOR ANY BUILDING WORK THAT IS CARRIED OUT ON SITE.
- THIS DRAWING IS TO BE READ IN CONJUNCTION WITH ALL NECESSARY ARCHITECTURAL, STRUCTURAL AND SPECIALIST DRAWINGS, SPECIFICATIONS, SCOPES OF WORK & ROOM DATA SHEETS.
- ALL MATERIALS AND WORKMANSHIP SHALL CONFORM WITH THE RELEVANT BRITISH AND EUROPEAN STANDARD, SPECIFICATIONS AND CODES OF PRACTICE.
- IF IN ANY DOUBT, ASK.
- WALKWAY DESIGN BY OTHERS. FINAL WALKWAY JUNCTIONS TBC.
- CONTAINER DIMENSIONS CAN VARY. ALL DIMENSIONS SHOULD BE CHECKED BEFORE SITE INSTALLATION.

C	31.07.17	ADDITIONAL ISOLATOR CHOICE ADDED, ISOLATORS RELOCATED & NOTES ADDED TO MATCH MANUFACTURERS PREFERENCES	RS	JS	JS
B	17.07.17	WALKWAY SUPPORT REVISED IN LINE WITH ENGINEERS DETAILS	RS	JS	JS
A	06.07.17	WALKWAY SUPPORT REVISED IN LINE WITH ENGINEERS DETAILS & NOTES UPDATED	RS	JS	JS
REV	DATE	REVISION	DRAWN	CHECKED	APPROVED

COPYRIGHT CITYZEN LIMITED

**CITYZEN**

ARCHITECTURE | ENVIRONMENT

MARITIME HOUSE  
BASIN ROAD NORTH  
HOVE  
EAST SUSSEX  
BN41 1WR

CONTACT@CITYZENDESIGN.CO.UK  
WWW.CITYZENDESIGN.CO.UK  
01273 704 901



Chartered Institute of  
Architectural Technologists  
Registered Practice

CLIENT:  
**CARGOTEK**

DESIGNER:  
**ROMAN SCHNECKER**

PROJECT:  
**CARGOTEK 20FT PRODUCT**

TITLE:  
**TYPE 3 - TYPICAL FRONT & REAR ELEVATIONS- HANDED**

SCALE:  
**1:20 @ A1**

DATE:  
**27.06.17**

PURPOSE OF DRAWING:  
**CONSTRUCTION**

DRAWING: PROJECT REF - DRG NO. (REVISION)  
**1705-CR-H352 (C)**

DRAWING SCALE 1:20 @ A1  
DRAWING SCALE 1:40 @ A3

0M 1M 2M  
SCALE BAR @ 1:20